

SEVENTH IKI EXCHANGE WORKSHOP IN MEXICO

Building a community to support climate
action and the conservation of biodiversity

June 29, 2023, Mexico City



Supported by:



on the basis of a decision
by the German Bundestag

The IKI Exchange Workshop in Mexico and the Community of Practice is implemented by the Mexican-German Climate Change Alliance project of the Deutsche Gesellschaft für Internationale Zusammenarbeit (GIZ) GmbH (German Agency for International Cooperation). The Mexican-German Climate Change Alliance is part of the International Climate Initiative (German abbreviation: IKI). The Federal Ministry of Economic Affairs and Climate Action (BMWK) endorses this initiative based on a decision adopted by the German Bundestag. The views expressed herein are the sole responsibility of the authors and do not necessarily represent the views of GIZ. Any reproduction, in part or in whole, is authorized, provided that it is not for commercial purposes and that the source is acknowledged.

GIZ. (2023).

Seventh IKI Exchange Workshop in Mexico: building a community to support climate action and the conservation of biodiversity.

Prepared by

Mona vom Endt and Emiliano Reyes Galindo, of the Mexican-German Climate Change Alliance, with the support of Francisco Padron Gil and Alfredo D. Cuaron de SACBÉ– Servicios Ambientales, Conservación Biológica y Educación A.C.

Editorial review

Fernanda Sotelo

Rapporteurs

Anna Cors Fabre, Isabel Padrón, Nayeli Soto Cabrera, Palmidya Diaz, Sofía Alcalá

Editorial design

Laguna

Deutsche Gesellschaft für Internationale Zusammenarbeit (GIZ) GmbH

Dag-Hammarskjöld-Weg 1-565760 Eschborn / Alemania www.giz.de

iki-alliance.mx

GIZ Office in Mexico

Torre Hemicor, Piso 11
Av. Insurgentes Sur No. 826 Col. Del Valle, Benito Juárez
C.P. 03100, Ciudad de México, México.
T +52 55 55 36 23 44

giz-mexiko@giz.de

iki.alliance.mexico@giz.de

— CONTENT

- 4 Introduction
- 5 Workshop IKI Mexico 2023
- 8 Germany and Mexico, strategic allies for climate and biodiversity protection
- 10 Exchange of projects, creating a map of climate action and biodiversity
- 11 Map of activities of IKI projects in Mexico
- 12 Good practices for the inclusion of gender perspectives and vulnerable communities in IKI projects
- 14 Conclusions and recommendations.
- 19 Creation of the IKI Community of Practice (IKI CoP) in Mexico
- 21 Foundations for the creation of the Community of Practice
- 24 Knowledge mapping
- 31 Conclusions
- 32 Attachment 1. IKI project field activities in Mexico



— INTRODUCTION

The seventh exchange workshop of the International Climate Initiative (IKI) was held on Thursday, June 29, 2023, in Mexico City. For the first time, the meeting took place within the framework of the [Sustainable Financing Festival](#), which was co-organized by the Ministry of Finance and Public Credit (Spanish abbreviation: [SHCP](#)), Nacional Financiera ([NAFIN](#)) and the Deutsche Gesellschaft für Internationale Zusammenarbeit ([GIZ](#)) GmbH (German Agency for International Cooperation).

The Festival provided a space for multi-stakeholder dialogue to promote the greening of the financial system. It fostered dialogue on the progress and challenges of climate, environmental and social financing in the country. The event was officially inaugurated on June 26 by the SHCP, NAFIN, the Ministry of the Environment and Natural Resources ([SEMARNAT](#)) as well as the German Embassy in Mexico.

The annual meeting of the IKI took place within this context. In addition to the project meeting, an IKI Community of Practice was also launched with the objective of creating a space for dialogue and knowledge management. On this occasion, the focus was on sustainable financing.

WORKSHOP IKI MEXICO 2023

Creating integrated solutions to meet the goals set out in the Paris Agreement and the Global Biodiversity Framework requires joint efforts as we move towards a sustainable and inclusive future. That is why various organizations implementing the IKI project and other organizations gathered at the **Seventh IKI Exchange Workshop in Mexico**.

The objectives of the workshop were:

- a) Present IKI novelties at the global and regional level.
- b) Exchange of experiences between IKI projects and others working on climate action and the conservation of biodiversity¹.

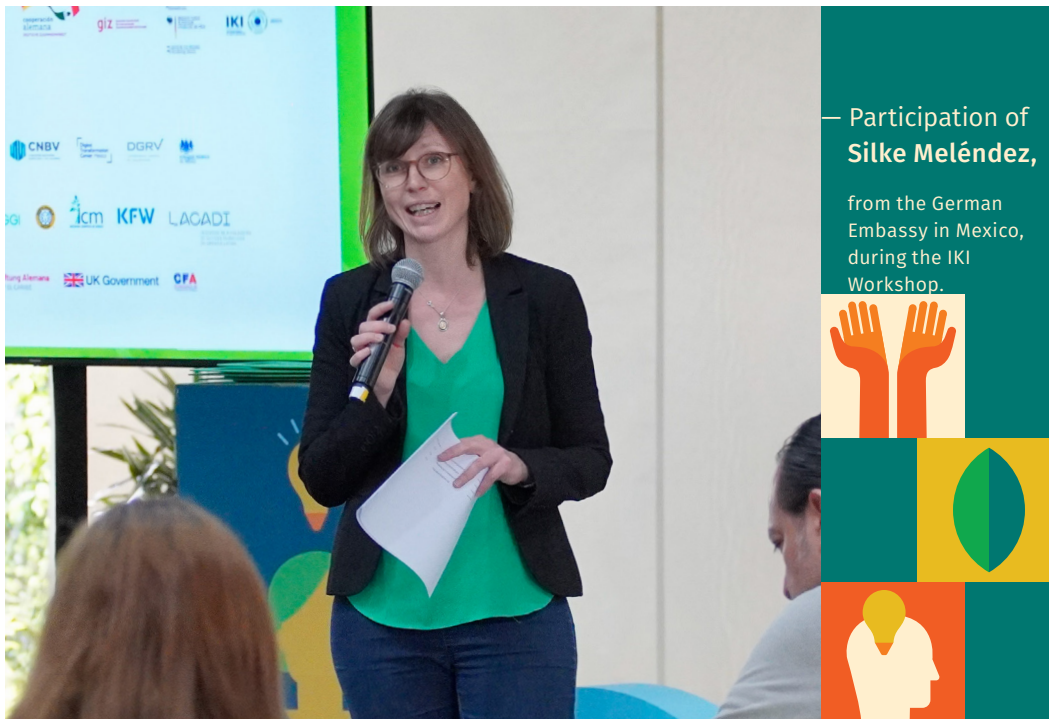
	ACTIVITY	PERSON RESPONSIBLE
Agenda	Introduction	Mona vom Endt, IKI Interface in Mexico
	Welcome remarks	Silke Melendez, German Embassy in Mexico
	Presentation of novelties of the IKI	Philipp Behrens, BMWK and Julia Reinartz, BMUV
	Exchange between projects: Map of activities and experiences in Mexico	IKI Projects
	Conclusions and wrap-up	Mona vom Endt, IKI Interface in Mexico, Lorena Gudino, Mexican-German Climate Change Alliance

¹ Biodiversity conservation from the perspective of protection, sustainable use and restoration.



A total of 57 people attended, including representatives from the German Federal Ministry of Environment, Nature Conservation, Nuclear Safety and Consumer Protection ([BMUV](#)), the Federal Ministry of Economic Affairs and Climate Action ([BMWK](#)), Mexican government agencies and the staff of the IKI projects in Mexico. Also, Zukunft - Umwelt - Gesellschaft (ZUG) GmbH participated online.

The IKI Workshop was launched by Silke Meléndez of the German Embassy in Mexico and Philipp Behrens, Director General of the IKI Division of the Federal Ministry of Economy and Climate Protection ([BMWK](#)). In addition, Julia Reinartz from the Federal Ministry of Environment, Nature Conservation, Nuclear Safety and Consumer Protection ([BMUV](#)) shared updates on the IKI, including its global portfolio, funding amounts, and updates on topics such as gender, safeguards, and upcoming calls for proposals.



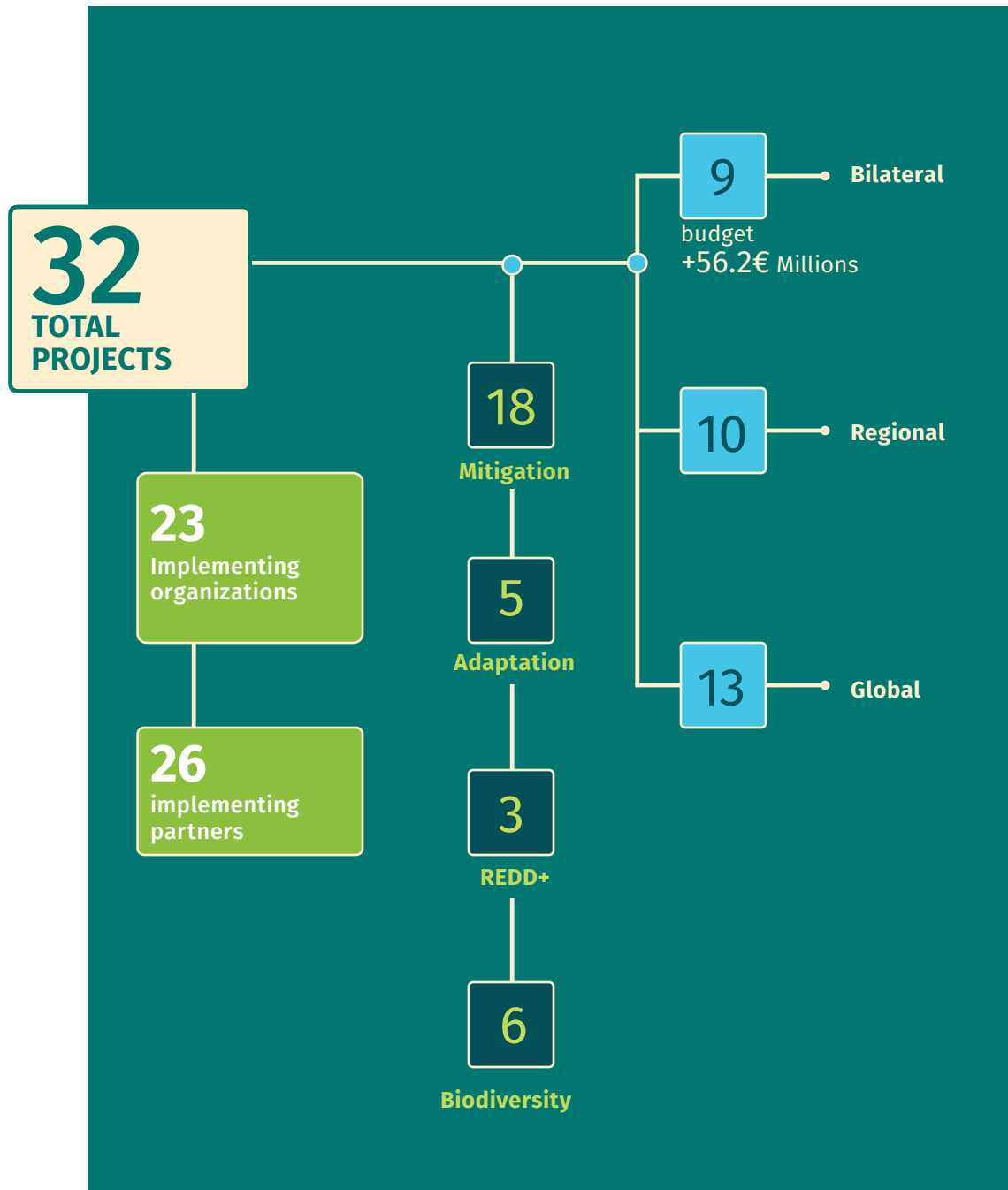


Figure 1. — Overview of IKI projects in Mexico.

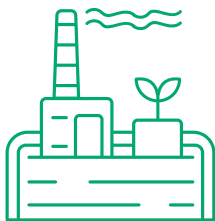
There are currently 32 IKI projects in Mexico, implemented by 23 organizations jointly with 26 partner organizations.

GERMANY AND MEXICO, STRATEGIC ALLIES FOR CLIMATE AND BIODIVERSITY PROTECTION

Mexico and Germany are global partners that cooperate with the aim of finding common solutions to today's environmental challenges and achieving transnational goals for sustainable, inclusive and resilient development. Both countries work closely to promote cooperation to address climate change. The IKI is a key component to further advance these goals.

Through the IKI, the BMWK, the BMUV and the Ministry of Foreign Affairs ([AA](#)) jointly support efforts in developing countries and emerging economies to implement and work towards their Nationally Determined Contributions (NDC's) under the Paris Agreement. This includes measures to adapt to the impacts of climate change and conserve and rebuild natural carbon sinks. The IKI also supports its partner countries in achieving their Convention on Biological Diversity ([CBD](#)) goals.

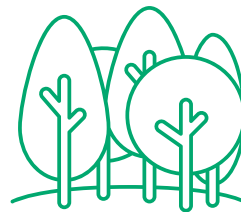
The IKI is therefore an important component of German international climate funding and contributes to the fulfillment of Germany's obligations as a party to the United Nations Framework Convention on Climate Change ([UNFCCC](#)) and the CBD.



Mitigation of greenhouse gas emissions



Adaptation to the impacts of climate change



Conservation of natural carbon sinks (REDD+)



Conservation of biodiversity



“We are very pleased that this year’s IKI meeting is being held as part of the Sustainable Financing Festival. Funding is key to accelerating the implementation of concrete actions. In order to achieve the global climate and biodiversity goals, an integrated systemic approach between the public and private sectors is essential.”

— **Dr. Philipp Behrens**

Dr. Philipp Behrens, Head of IKI Division, BMWK

“ Since 2008, the IKI has approved more than 800 projects globally, with a funding volume of around €5 billion. In parallel, the IKI’s annual financial expenditure has steadily increased from €120 million in 2008 to €596 million in 2021.”



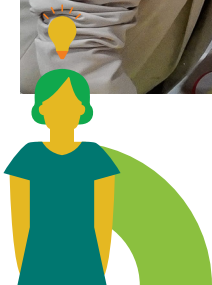
— **Julia Reinartz**

International Affairs of Biodiversity Division, BMUV

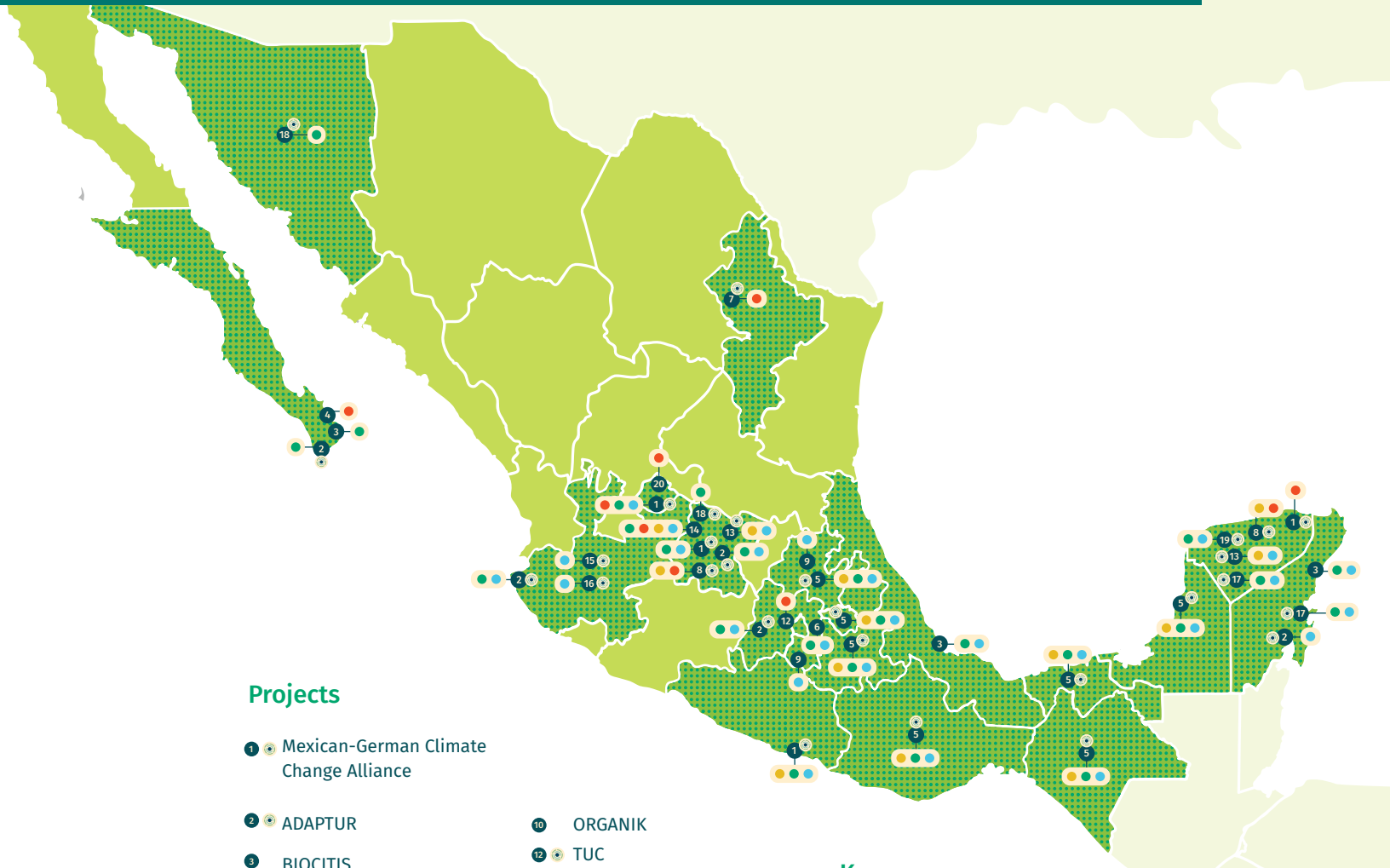
EXCHANGE OF PROJECTS, CREATING A MAP OF CLIMATE ACTION AND BIODIVERSITY

The projects exchanged on their main activities, points of action, gender perspective, and involvement of indigenous peoples and vulnerable communities in a mapping exercise.

Each table made up of people from different projects created its own map. Based on the discussions and the elaboration of the maps, a preliminary identification of some actions within the Mexican territory was made. The objective is to begin to identify possible synergies of cooperation, by understanding that different projects have an impact on similar issues or geographical overlap. Finally, a list of good practices on gender perspective integration and inclusion of vulnerable communities in the IKI projects is also included.



MAP OF ACTIVITIES OF THE PROJECTS PARTICIPATING IN THE IKI 2023 WORKSHOP INSIDE MEXICAN TERRITORY








Projects

- 1 Mexican-German Climate Change Alliance
- 2 ADAPTUR
- 3 BIOCITIS
- 4 CERCA
- 5 SABERES
- 6 Cuencas Verdes
- 7 ACCESS
- 8 NAMA SME
- 9 Bosque de Agua
- 10 ORGANIK
- 12 TUC
- 13 BIOFIN
- 14 Recuperación Verde
- 15 PoliLAC
- 16 Lagos Vivos
- 17 Costas Listas
- 18 EcoZonas
- 19 CITIES ADAPT
- 20 SICEM

Projects are at the exact location pinpointed in the map.

More detailed information on project activities can be found in the attachment on page 32.

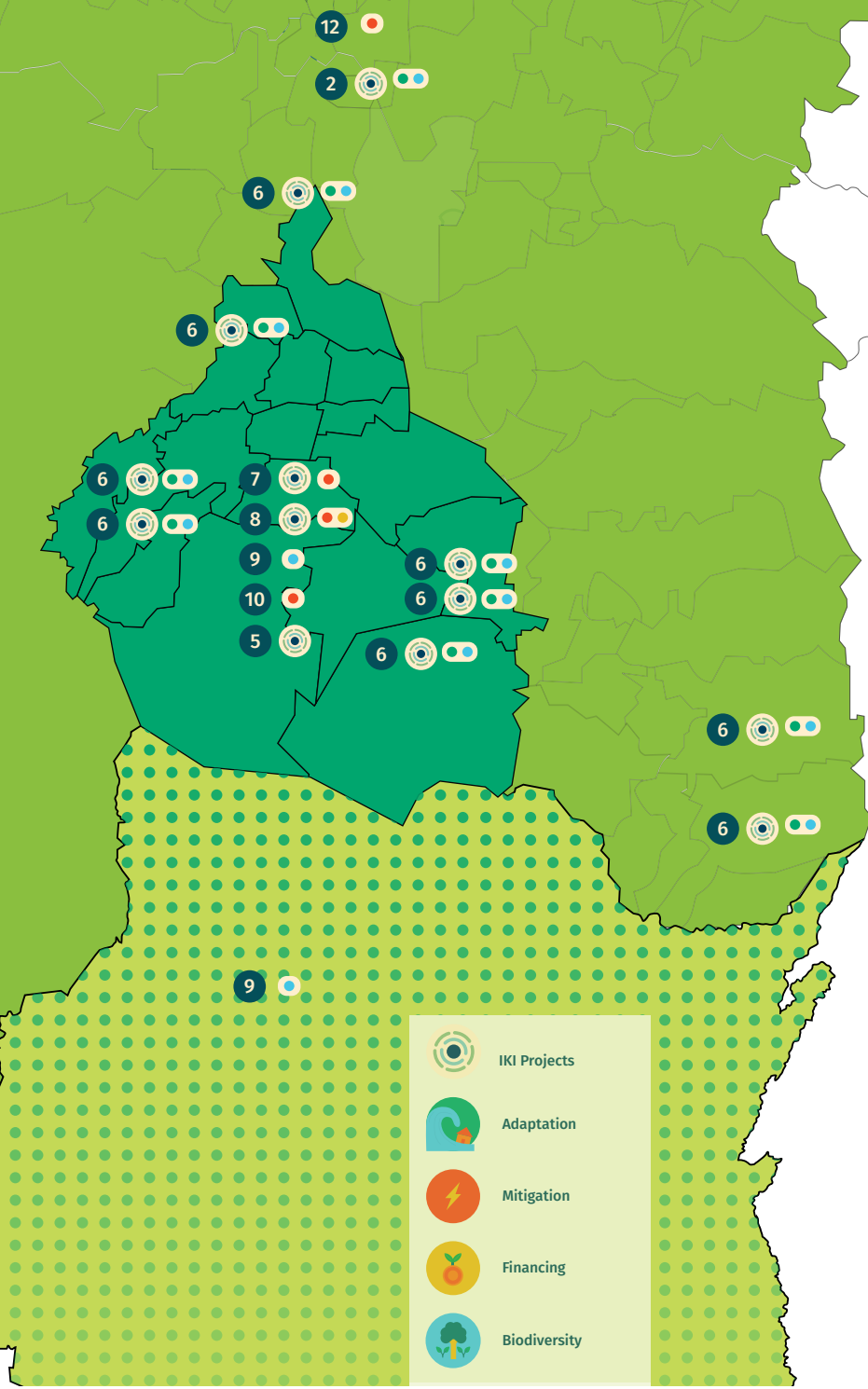
Key

-  IKI Projects
-  Adaptation
-  Mitigation
-  Financing
-  Biodiversity

CLOSEUP OF MEXICO CITY, STATE OF MEXICO AND MORELOS

PROJECTS

- 1 Mexican-German Climate Change Alliance
- 2 ADAPTUR
- 3 BIOCITIS
- 4 CERCA
- 5 SABERES
- 6 Cuencas Verdes
- 7 ACCESS
- 8 NAMA PYME
- 9 Bosque de Agua
- 10 ORGANIK
- 12 TUC
- 13 BIOFIN
- 14 Recuperación Verde
- 15 PoliLAC
- 16 Lagos Vivos
- 17 Costas Listas
- 18 EcoZonas
- 19 CITIES ADAPT
- 20 SICEM



	IKI Projects
	Adaptation
	Mitigation
	Financing
	Biodiversity

GOOD PRACTICES FOR THE INCLUSION OF GENDER PERSPECTIVES AND VULNERABLE COMMUNITIES IN IKI PROJECTS.



Mexican-German Climate Change Alliance

- Integration of activities with a gender perspective in a transversal and territorial way. For example, integrating gender criteria for the prioritization of women-led community projects. Support for the Mexican Government in its gender and climate change strategy.

LACADI

- Given that there is a large gender bias in relation to investors and that the financial sector is highly male-dominated, the project seeks to integrate mainly women in workshops and training. Besides, its team comprises 90% women.

TUC

- The project acknowledges that there is a gender bias in public office, which is why it promotes local women's leadership. In addition, it seeks to create neutral spaces so that women can feel free and safe when participating, for example, in the Urban Laboratories. Horizontal participation schemes are prioritized.

Cuencas Verdes

- Encourage and ensure the participation of female tenants of common land (ejidatarías) in the project.
- Consider the requirements for more female fire brigade members to participate.

Living Lakes

- Capacity building through participatory dialogue with local people.

NAMA SME

- A mentoring program is being conceptualized to train women as developers of energy efficiency projects.
- Commitment to the development of women's technical skills.
- Women-led SMEs are prioritized.

Land use planning and financial innovation to increase Mexico's resilience to climate change (Saberes)

- Mostly work with rural organizations (approximately 60% common land (ejidos) and 30% indigenous communities).
- The project seeks to recognize, record and disseminate the experiences and know-how about ecosystem-based adaptation of commonly marginalized groups.
- Priority for funding is given to women's groups to promote their participation in production chains.
- Work with women, young people and local residents by means of consultations and adaptation programs.

Green Recovery

- Development of a microproject aimed at providing business tools to women in the entrepreneurial sector.
- Support in intervention, auditing and financing issues for women-led businesses.

CITIES ADAPT

- Promote an equitable approach to care-related tasks so that the responsibility does not fall solely on women.
- Translate information materials into the Mayan language.
- Mapping of solutions based on the nature of Mayan culture.

Bosque de Agua

- Encourage women to participate and be involved in decision making.
- Training for women in the installation and operation of rainwater harvesting systems.
- Joint work with the four indigenous peoples of the area.
- Transform current community agreements to favor increased participation of women.

CONCLUSIONS AND RECOMMENDATIONS:

- ▶ As seen in the geographical distribution, project activities represented in the workshop are distributed at national level and in 18 states. Most projects' activity is clustered in five states: Mexico City, Guanajuato, Jalisco, Quintana Roo and Yucatan. In addition, states with a significant concentration of IKI projects have been identified. In some states the projects intervene in only a few localities. Most of the projects operate on the mainland portion of the country. There is very little IKI project activity in the Mexican offshore regions.
- ▶ In two of the states, Oaxaca and Chiapas, with the greatest biological diversity in Mexico, and nodes of global biodiversity, IKI projects show little presence. There is an opportunity here to create a presence and forge alliances with organizations working in these states. Likewise, states with strong industrial activity, likely responsible for significant greenhouse gas emissions, such as Aguascalientes, Coahuila, Jalisco, Nuevo León, San Luis Potosí and Querétaro, are underrepresented in IKI projects. States with significant vulnerability to hydrometeorological hazards, such as Baja California Sur, Colima, Guerrero, Oaxaca, Michoacán and Quintana Roo, have potential for collaboration, especially with work related to ecosystem-based adaptation measures.
- ▶ There is an opportunity to build greater work synergies in each of the states and regions in which the projects operate, as well as greater exchange between projects with related themes or activities working in different states and at the national level. The formalization and consolidation of a Community of Practice may contribute to creating synergies between the various projects. An example, due to geographic coincidence, collaborations could be established between the following projects:



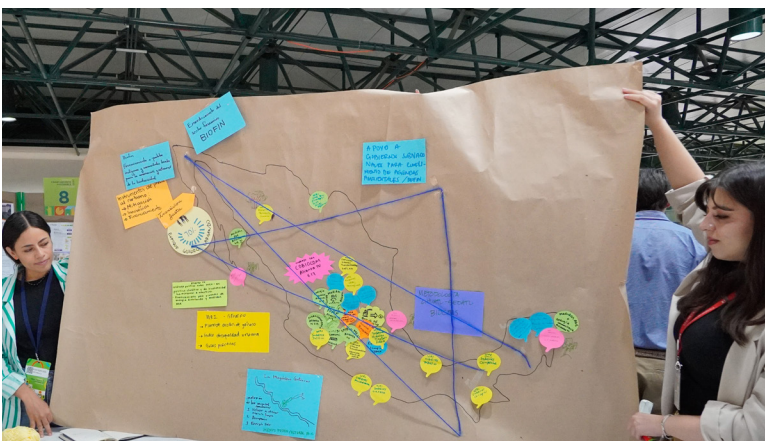
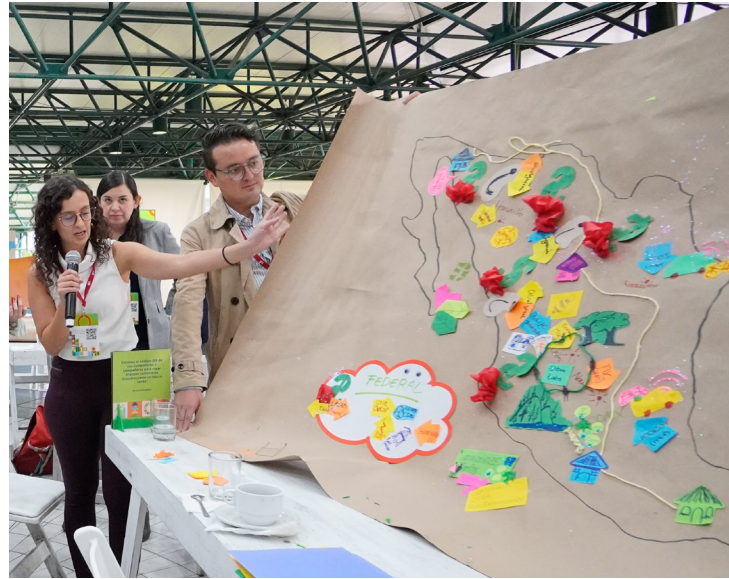
- ▶ NAMA SME, Recuperación Verde and Cumbres Resilientes in Guanajuato.
- ▶ Cumbres Resilientes and Bosque de Agua in the Neovolcanic Axis.

Examples by thematic match:

- ▶ As for sustainable urban development, potential collaboration is identified between ACCESS, BIOCITIS, Ecozones and Coaliciones Urbanas Transformadoras.
- ▶ With regard to production systems there is potential collaboration between SABERES, Lagos Vivos, Cuencas Verdes and PoliLAC.
- ▶ Regarding the marketing and financing of sustainable products and services, there are opportunities for synergy between EcoAdvance, NTT Data, TCFD and LACADI.
- ▶ With respect to marine topics, there is convergence between Costas Listas and Océano Blanco.
- ▶ The level and quality of the information produced during the workshop on the locations or regions of intervention of the organizations is heterogeneous, so it will be key to continue the dialogues to build a more detailed mapping and promote the collaboration between IKI projects in Mexico in a clearer fashion.



MAPS OF IKI PROJECTS IN MEXICO, PREPARED BY THE DIFFERENT WORKING GROUPS:



IKI WORKSHOP PARTICIPANTS:

53%
Women



47%
Men



57 people — 30 women | 27 men

SOME PARTICIPATING INSTITUTIONS:



CREATION OF THE IKI COMMUNITY OF PRACTICE (IKI COP) IN MEXICO

During the 2022 IKI Workshop, participants identified that the IKI Interface in Mexico has an opportunity to further promote and encourage the exchange between projects to share best practices, lessons learned, tools, and knowledge, and thus create synergies. This is why, the IKI is promoting the creation of a Community of Practice (CoP).

	ACTIVITY	PERSON RESPONSIBLE
Agenda	Presentation on communities of practice.	IKI interface in Mexico
	Definition and selection of priority issues for the community.	Participating projects
	Mapping of knowledge and needs of the community.	
	Outlining the community of practice.	
	Conclusions and wrap-up	IKI interface in Mexico

The **objective** of the workshop was to create a system of cooperation of IKI projects through a Community of Practice to:

- **Strengthen the implementation** of climate action and biodiversity conservation in order to increase environmental ambition.
- **Improve the exchange of good practices** and knowledge management.
- **Coordinate cooperation processes** that lead to collaboration.

Benefits include:

- ▶ Interaction with people and organizations implementing IKI projects.
- ▶ Opportunities to scale and replicate actions.
- ▶ Share knowledge to enhance and ensure the sustainability of what is being done.
- ▶ Increase the visibility of the projects both to clients and the partners.
- ▶ Reduce knowledge gaps.
- ▶ Share IKI information and communications.
- ▶ Create diagnostics to improve project execution (for example, how to implement the topic of digitalization or incorporate the gender perspective, among many others).
- ▶ Creation of information resources for the IKI projects.

These activities marked the beginning of the formation of the CoP of the IKI projects (IKI CoP) following the IKI Workshop. Given the general context of the Sustainable Finance Festival, during which the workshop was held, the objective of this CoP meeting was to discuss the topic of sustainable finance.



FOUNDATIONS FOR THE CREATION OF THE COMMUNITY OF PRACTICE

What is a community of practice?

A Community of Practice (CoP) is a non-hierarchical, practice-oriented form of learning aimed at the exchange of knowledge and experience. It consists of a group of people with similar goals who exchange opinions in a defined area of expertise and generate new knowledge together. A CoP helps to generate institutional memory and develops new knowledge and competencies that foster innovation and collaboration (Capacity Works, 2014).

Key components:

a) Domain:

A theme or area of shared interest, in this case, climate action and biodiversity conservation in Mexico.

b) Community:

People and institutions who share this interest and are willing to collaborate.

c) Practice: The exchange of knowledge, experiences and best practices related to the given topic.

Principles of communities of practice:

a) Participation:

All members actively contribute and engage in the exchange of knowledge and experience.

b) Collaboration:

Collaboration among members is key to fostering joint learning and problem solving.

c) Knowledge building:

Through constant exchange, members build and share knowledge and best practices.

HOW CAN COMMUNITIES OF PRACTICE SUPPORT CLIMATE ACTION AND BIODIVERSITY CONSERVATION IN MEXICO?

A. Promoting collaboration:

- ▶ **Breaking silos:** Communities of practice bring together people from different organizations and projects, promoting collaboration between them and avoiding duplication of efforts.

Exchange of knowledge and experiences: Members share lessons learned, research, tools and effective solutions to strengthen climate action and biodiversity conservation in Mexico.

B. Joint Learning:

- ▶ **Professional development:** Communities of practice provide opportunities for continuous learning and skill development through interaction with experts and professionals in the field.

- ▶ **Reflection and improvement:** Ongoing exchange allows participants to reflect on their own practices and improve them through feedback and co-creation of knowledge.

C. Innovation and scalability:

- ▶ **Identification of innovative solutions:** By bringing together people with different perspectives and experiences, communities of practice encourage the generation of ideas and the identification of novel solutions to address the challenges of climate action and biodiversity loss.
- ▶ **Scalability of best practices:** Communities of practice can serve as a platform where best practices can be disseminated and scaled, helping projects have greater impact at the national, regional and global levels.



Communities of practice offer a powerful approach to drive collaboration, joint learning and innovation in climate action and biodiversity conservation in Mexico.

By connecting people from different organizations and projects, these communities provide a valuable platform for sharing knowledge, improving practices and generating innovative solutions.

Objetivo de impulsar la cooperación
entre proyectos IKI y consorcios
de implementación más holística
de proyectos IKI
consolidar diversas
de
Práctica.



— Philipp Schukat,
Coordinator of the IKI
Interface in Mexico presenting
the Community of Practice.



KNOWLEDGE MAPPING

In a first step, the projects identified topics that were of particular interest to them. Once selected, the participants were divided into working groups to identify expert institutions on the subject, as well as available support resources and tools. Finally, some knowledge gaps and needs were outlined.

The five topics selected were:

- ▶ Financing for biodiversity.
- ▶ Identification of funding sources.
- ▶ Financing with a gender perspective.
- ▶ Financing for vulnerable communities and municipalities.
- ▶ Public-private partnerships.

The results of the working groups are presented below:

TOPIC 1 – Financing for biodiversity

Sources of knowledge and experiences

Institutions

- ◆ Global Environment Fund (GEF)
- ◆ Global Green Growth Institute (GGGI)
- ◆ Mexican-German Climate Change Alliance and GIZ
- ◆ CONAFOR - FFM (Mexican Forest Fund)
- ◆ Financing for Biodiversity of the United Nations Development Program (BIO-FIN)
- ◆ Colombian Federation of Livestock Farmers (FEDEGAN)
- ◆ Alianza del pastizal
- ◆ NAFIN (Nacional Financiera S.N.C.)
- ◆ KfW (German Development Bank)

Resources/ Tools

- ◆ Digital accessibility to a global biodiversity database (GIZ)
- ◆ Capacity Building Strategy (ADAPTUR-GIZ)
- ◆ Financing Courses (GIZ)
- ◆ Mapping of possible international funding sources (available on the website of the Presidential Agency for International Cooperation of Colombia/KAR-EN-GIZ)
- ◆ Methodological framework for ecosystem-based adaptation (IUCN)
- ◆ Guide to investments adapted to climate change (ADAPTUR-GIZ)
- ◆ Payment model for environmental services for cattle ranches (FEDEGAN)
- ◆ Portfolio of impact investment projects and ventures (GIZ)

Knowledge needs or best practices

Knowledge development interest or needs.

- ◆ Practical examples of “conservation banking” cases
- ◆ A public knowledge framework for aquatic, ocean and river biodiversity.
- ◆ Diagnoses and evaluations of project outcomes as benchmarks for adapting urban garden projects in new contexts.
- ◆ Knowledge of potential funding sources for small-scale projects.

TOPIC 2— Identification of funding sources

Sources of knowledge and experiences

Institutions

- ◆ Instituto Corazón de la Tierra (ICT)
- ◆ Iniciativa Climática de México (LACADI)
- ◆ GIZ

Resources/ Tools

- ◆ Financing guide for energy efficiency projects in municipalities (TREM GIZ)
- ◆ Atungy course (TREM GIZ)
- ◆ Bank document for sustainable financing with institutional investors (AFORES INSURANCE)
- ◆ Funding Strategy (Instituto Corazón de la Tierra)
- ◆ ADAPTUR methodology for financing mechanisms
- ◆ ADAPTUR Training program - Financing for Climate Action Module
- ◆ Databases of calls (CERCA)
- ◆ Directory of foundations (CERCA)
- ◆ Scheme of multisectoral collaborations for social causes (CERCA)
- ◆ Regional transversal work initiatives (CERCA)

Knowledge needs or best practices

Knowledge development interest or needs.

- ◆ Mapping of projects on ecosystem-based adaptation (EbA) and community energy
- ◆ Roadmap for access to funding sources
- ◆ Identification projects with clear financial indicators
- ◆ Knowing success stories and ways of replicability
- ◆ Effective methodologies for submitting calls for proposals

TOPIC 3— Financing with a gender perspective.

Sources of knowledge and experiences

Institutions

- ◆ Mexican-German Climate Change Alliance (GIZ)
- ◆ NAMA SME (GIZ)

Resources/ Tools

- ◆ Gender Index (SHCP)
- ◆ Sustainable Taxonomy of Mexico
- ◆ Gender Strategy (GIZ)
- ◆ Development of projects or initiatives led or represented by women or vulnerable groups (GIZ Mexico, Cities Cluster)
- ◆ Guide to mobility projects with a gender perspective and inclusion (ITDP)
- ◆ Indicator systems (gender sensitive, responsive, transformative)
- ◆ Gender analysis in energy efficiency (NAMA SME, GIZ)

Knowledge needs or best practices

Knowledge development interest or needs.

- ◆ Information disaggregated by gender in the implementation of projects.
- ◆ Gender gap data and statistics.
- ◆ Financial products tailored to women's needs (loans, scholarships).
- ◆ Awareness of strategic stakeholders.
- ◆ Consideration of women's needs in all their diversity in climate action and biodiversity projects.

TOPIC 4— Financing for vulnerable communities and municipalities

Sources of knowledge and experiences

Institutions

- ◆ Fondo Noroeste (FONNOR)
- ◆ Pronatura
- ◆ GIZ
- ◆ International Union for Conservation of Nature (IUCN)
- ◆ World Resources Institute (WRI) Mexico
- ◆ Comisión Nacional de Áreas Naturales Protegidas (CONANP)

Resources/ Tools

- ◆ Online tool for ecosystem-based adaptation to climate change (IUCN)
- ◆ Experience in the implementation of Nature-based solutions and private sector financing (ADAPTUR)
- ◆ Guide to Nature-Based Solutions (World Bank)
- ◆ Nature-Based Solutions Standard (IUCN)
- ◆ Implementation guide for nature-based solutions (NbS) projects for climate action. (Diego Magaña, GIZ)
- ◆ Lessons learned in Latin America on the implementation of nature-based solutions (NbS) and ecosystem-based adaptation (EbA)
- ◆ Adaptation, livelihoods and ecosystems planning tool (ALIVE)

Knowledge needs or best practices

Knowledge development interest or needs.

- ◆ Basic concepts on Nature-based Solutions (NbS).
- ◆ Assessment tool IV (CICLIM)
- ◆ Urban-scale monitoring of NbS (CITIES ADAPT)
- ◆ Subsidies to implement NbS.
- ◆ Mapping of investment needs in Fair Energy Transition and Agroforestr (ICM)

TOPIC 5— Public-private partnerships (PPP).

Sources of knowledge and experiences

Institutions

- ◆ GGGI
- ◆ GIZ
- ◆ Tourism Alliance for the Protection of Water, Biodiversity, Climate and Communities (GIZ, UNDP, others)

Resources/ Tools

- ◆ Financing Program DeveloPPP
- ◆ Grant Agreements (GIZ)
- ◆ H2UPP for green hydrogen
- ◆ Collective Leadership ADAPTUR methodology for coordination mechanism (GIZ)
- ◆ Classification of institutional investment disclosure gaps (ICM)
- ◆ APP BID Investment (BID)

Knowledge needs or best practices

Knowledge development interest or needs.

- ◆ Knowing success stories and ways of replicability
- ◆ Mexico PPP Projects
- ◆ State and local PPP laws
- ◆ Steps to create a public-private partnership.

VARIOUS AGREEMENTS WERE REACHED, AND THE FOLLOWING STEPS WERE DEFINED

Agreements and next steps

1. Creation of the IKI Community of Practice in which people committed to sharing experiences, knowledge and best practices, as well as creating innovative solutions, will participate.
2. Continuation and fine-tuning of knowledge mapping on financing among the participating individuals and institutions.
3. The seven principles for the coexistence and effectiveness of the Community of Practice chosen by the group were:
 1. Compartir conocimiento, experiencias, ideas y mejores prácticas.
 2. Active participation.
 3. Cooperation and collective knowledge building.
 4. Mutual learning.
 5. Focus on achieving results.
 6. Flexibility and adaptability
 7. Constructive feedback.
4. The preferred communication channels for the group will be mailing lists and a Teams channel.
5. The digital repository for the community will be on the IKI Alliance Mexico Blog.

— CONCLUSIONS

This year, the IKI celebrates 15 years of promoting climate action and biodiversity conservation to meet the global goals to which the member states have committed themselves.

In Mexico we have a wide range of activities that are carried out within the framework of the IKI cooperation, where we cooperate on various issues. A central issue, due to the country's vulnerability to climate change, is adaptation and synergies with biodiversity. In addition, IKI projects, although distributed in various regions of the country, are concentrated in the center and south of Mexico, bearing in mind the climatic conditions and the high level of biological diversity.

With the aim of promoting synergies between projects, the first IKI Community of Practice in Mexico was inaugurated at this event. This session held during the Sustainable Financing Festival brought together the implementers of IKI projects to discuss and identify gaps and opportunities in the field of climate finance. This is only the beginning of what must become a long-term effort to build a cordial and productive collaborative environment. It will require a congruent and sustained effort to facilitate the process of social participation.

This is the first step towards building a stronger and more cooperative community that seeks to share knowledge, lessons learned and best practices. At the IKI Interface in Mexico we are committed to supporting projects to build alliances for climate action and biodiversity conservation.



ATTACHMENT 1

IKI PROJECT FIELD ACTIVITIES IN MEXICO

STATE

Project (Commissioned by)

ORGANIZATION

– Activity



Adaptation



Mitigation



Financing



Biodiversity

AGUASCALIENTES



Mexican-German Climate Change Alliance (IKI)



GIZ



– Support the state government in its climate change program.



Preparation of an Emissions Trading System (ETS) in Mexico (SICEM) (IKI)

GIZ

– Support the state in developing a carbon pricing mechanism.

BAJA CALIFORNIA SUR



ADAPTUR - Ecosystem-based Climate Change Adaptation with the Tourism Sector (IKI)

GIZ

– Ecosystem-based strategic adaptation to climate change in the tourism sector.

BIOCITIS - Protection of biodiversity and ecosystem services in urban coastal regions in Mexico (BMZ) (La Paz, Los Cabos)

GIZ

– Urban development with integration of ecosystem services in coastal cities.
 – Rehabilitation of a public park through a participatory process during which theoretical and practical knowledge on environmental issues, trades, and the maintenance of a public space is transmitted (San José del Cabo).
 – Awareness campaign on sustainable tourism and the importance of water in Cabo Pulmo National Park

Communities facing energy vulnerability in Baja California Sur


CENTER FOR RENEWABLE ENERGY AND ENVIRONMENTAL QUALITY (CERCA)

– Diagnosis of communities facing energy vulnerability.
 – Seminar with young people on project innovation.
 – Innovation seminar for young people with a productive approach in rural communities.

CAMPECHE



SABERES - Territorial Planning and Financial Innovation to increase Mexico's Resilience to Climate Change (IKI)

-  **WRI**
 - Collaboration with small producers' organizations in 10 production chains.
 - Change of productive activities in the context of land-use planning based on ecosystem-based adaptation.
 - Financing scheme for small producers.

CIUDAD DE MÉXICO



Resilient forests and financing options for sustainable water supplies in the tropics (Cuencas Verdes) (IKI)


(San Pablo Oztotepec, San Lorenzo Acopilco, Desierto de los Leones National Park, Ejidos de Xochimilco and San Gregorio Atlapulco)

- PRONATURA**
 - Work in areas that combine valuable ecosystem functions and services to encourage their conservation and restoration in collaboration with the communities.
 - Training of various types of ecotechnologies and ecosystem resilience.
 - Independent governance of communities.

ACCESS - Accelerating Access to Low Carbon Urban Mobility Solutions through Digitalization (IKI)

- ITDP**
 - Public passenger transport; sustainable last mile delivery solutions.

NAMA SME - Energy Efficiency in SMEs as a Contribution to a Low Carbon Economy (Mitigation Action Facility)

-  **GIZ**
 - Technical support and financial assistance to SMEs for the implementation of energy efficiency measures and services.
 - Loan provision tailored to the needs of the companies.
 - Collaboration with state governments to conduct pilot

- programs with SMEs in the industrial sector.
 - Work to raise awareness among SMEs.
 - Catalyzing green financing and supporting political dialog for energy efficiency and competitiveness of the SME sector.

Bosque de Agua

FUNBA

- Regional strategy for the conservation and sustainable use of forest areas in watersheds.
- Installation of water harvesting systems in areas with high precipitation, but low availability of water in the Tepoztlan Valley.
- Design and supervision of committees for the management of the water system of different villages.

- Cleaning and revitalization of the water flow.
- Campaigns for the conservation of ajolotes (type of salamander).
- Initiative to supply the Dinamos (Natural Protected Area) with energy from the Magdalena River.
- Promotion and management of vertical urban gardens.

ORGANIK

- Community recycling system based on the needs and solutions generated by the community through training processes.
- Creation of "clean points" where solid urban waste can be taken for recycling.

CHIAPAS



SABERES - Territorial Planning and Financial Innovation to increase Mexico's Resilience to Climate Change (IKI)

WRI

- Collaboration with small producers' organizations in 10 production chains.
- Change of productive activities in the context of land-use planning based on ecosystem-based adaptation.
- Financing scheme for small producers.



MEXICO STATE



Cuencas Verdes (IKI) (Atlautla de Victoria, Amecameca, Sierra de Guadalupe State Park)



PRONATURA

- Work in areas that combine valuable ecosystem functions and services to encourage their conservation and restoration in collaboration with the communities.
- Training of various types of ecotechnologies and ecosystem resilience.
- Independent governance of communities.



TUC - Transformative Urban Coalitions: Catalyzing urban collaborations to drive systemic transformation toward sustainability (IKI) (Naucalpan)

WRI

- Seeks to propose new governance models for decision-making with the participation of the private sector, academia, civil society, and the local communities and neighbors.
- Design of an urban laboratory model for decision making.
- Promotion of urban gardens.
- Investment in green infrastructure in public space.
- Urban solid waste management.



ADAPTUR - Ecosystem-based Climate Change Adaptation with the Tourism Sector (IKI)



GIZ

- Ecosystem-based strategic adaptation to climate change in the tourism sector.

GUERRERO



Mexican-German Climate Change Alliance (IKI) (Playa Ventura)

GIZ

- Pilot Program with Granja Solar Playa Ventura Cooperative.
- Accompany the formalization of the energy cooperative.

GUANAJUATO



Mexican-German Climate Change Alliance (IKI)

GIZ

- Support for the state government in aligning climate, biodiversity and tourism agendas.

BIOFIN - Biodiversity Finance Initiative (IKI)

UNDP

- Strengthening the Environmental Fund (FOAM) to reduce resource needs, streamline the efficient use of current resources, avoid future costs due to negative impacts and/or align resources and spending.

NAMA SME - Energy Efficiency in SMEs as a Contribution to a Low Carbon Economy (Mitigation Action Facility)

GIZ

- Technical support and financial assistance to SMEs for the implementation of energy efficiency measures and services.
- Loan provision tailored to the needs of the companies.
- Collaboration with state governments to conduct pilot programs with SMEs in the industrial sector.
- Work to raise awareness among SMEs.
- Catalyzing green financing and supporting political dialog for energy efficiency and competitiveness of the SME sector.
- Work to raise awareness among SMEs.
- Catalyzing green financing and supporting political dialog for energy efficiency and competitiveness of the SME sector.

ADAPTUR - Ecosystem-based Climate Change Adaptation with the Tourism Sector (IKI)

GIZ

- Ecosystem-based strategic adaptation to climate change in the tourism sector.

Tackling the consequences of COVID-19: Recuperación Verde - Innovation, resilience and employment in MSMEs (BMZ).

GIZ

- Support MiPYMES in their green economic development and/or toward their business formalization.

HIDALGO



Bosque de Agua

FUNBA

- Regional strategy for the conservation and sustainable use of forest areas in watersheds.
- Design and supervision of committees for the management of the water system of different villages.
- Cleaning and revitalization of the water flow.
- Campaigns for the conservation of ajolotes (type of salamander).
- Promotion and management of vertical urban gardens.



SABERES - Territorial Planning and Financial Innovation to increase Mexico's Resilience to Climate Change (IKI)



WRI

- Collaboration with small producers' organizations in 10 production chains.
- Change of productive activities in the context of land-use planning based on ecosystem-based adaptation.
- Financing scheme for small producers.



JALISCO



POLLAC - Regional action to improve insect pollinators protection and pollination services in Latin America (IKI)

GIZ

- Promote the exchange of regional knowledge, good practices, and public policies that seek to enhance the protection of pollinators such as bees, butterflies and moths.



Living Lakes - Strategies to protect aquatic ecosystem biodiversity (IKI) (Chapala Lagoon) (LAGUNA DE CHAPALA)

- Promote agroecological practices.
- Regenerative livestock training.
- Actions to promote aquifer recharge through the link between forests and people.

ADAPTUR - Ecosystem-based Climate Change Adaptation with the Tourism Sector (IKI)

GIZ

- Ecosystem-based strategic adaptation to climate change in the tourism sector.

MORELOS



Bosque de Agua

FUNBA

- Regional strategy for the conservation and sustainable use of forest areas in watersheds.
- Installation of water harvesting systems in areas with high precipitation, but low availability of water in the Tepoztlan Valley.
- Design and supervision of committees for the management of the water system of different villages.
- Cleaning and revitalization of the water flow.
- Campaigns for the conservation of ajolotes (type of salamander).
- Promotion and management of vertical urban gardens.

NUEVO LEÓN



ACCESS - Accelerating Access to Low Carbon Urban Mobility Solutions through Digitalization (IKI) (Monterrey)

ITDP

- A public transportation data center and a bicycle pilot plan.

OAXACA



SABERES - Territorial Planning and Financial Innovation to increase Mexico's Resilience to Climate Change (IKI)

WRI

- Collaboration with small producers' organizations in 10 production chains.
- Change of productive activities in the context of land-use planning based on ecosystem-based adaptation.
- Financing scheme for small producers.

PUEBLA



SABERES - Territorial Planning and Financial Innovation to increase Mexico's Resilience to Climate Change (IKI)



WRI

- Collaboration with small producers' organizations in 10 production chains.
- Change of productive activities in the context of land-use planning based on ecosystem-based adaptation.
- Financing scheme for small producers.

QUINTANA ROO



Costas Listas - Integrating climate change in marine protected areas and coastal management of the Mesoamerican reef ecoregion (IKI)



WWF

- Integrate climate change considerations into the management of marine protected areas and coastal areas of the Mesoamerican Reef ecoregion.
- Develop a portfolio of climate change adaptation options identified through a participatory process that takes into account the needs of local communities and environmental conservation.
- Strengthen capacities of local populations and decision-makers to identify and prioritize climate change adaptation options.
- Integrate aspects and criteria of adaptation to climate change in territorial planning instruments.
- Form a working group in order to disseminate best practices on the identification, integration and implementation of adaptation measures in coastal zones and marine protected areas.

BIOCITIS - Protection of biodiversity and ecosystem services in urban coastal regions in Mexico (BMZ)

GIZ

- Urban development with integration of ecosystem services in coastal cities.
- Strengthening the integral management of Bacalar's water resources

ADAPTUR (IKI)

GIZ

- Ecosystem-based strategic adaptation to climate change in the tourism sector.

SONORA



EcoZonas - Test an approach to co-design, scale-up and replicate inclusive climate action at the neighborhood level (IKI). (Hermosillo)

WRI

- Integrate academia, civil society, private sector and government to generate urban improvement measures to increase resilience.
- Improvement of neighborhoods through the participation of the people living there.

TABASCO



SABERES - Territorial Planning and Financial Innovation to increase Mexico's Resilience to Climate Change (IKI)

WRI

- Collaboration with small producers' organizations in 10 production chains.
- Change of productive activities in the context of land-use planning based on ecosystem-based adaptation.
- Financing scheme for small producers.

TLAXCALA



SABERES - Territorial Planning and Financial Innovation to increase Mexico's Resilience to Climate Change (IKI)

WRI

- Collaboration with small producers' organizations in 10 production chains
- Change of productive activities in the context of land-use planning based on ecosystem-based adaptation.
- Financing scheme for small producers.

VERACRUZ



BIOCITIS - Protection of biodiversity and ecosystem services in urban coastal regions in Mexico (BMZ) (Veracruz, Boca del Rio, Alvarado)

GIZ

- Urban development with integration of ecosystem services in coastal cities.
- Raising awareness about the benefits of the Veracruz Reef System.
- Environmental education strategy based on demo projects of green infrastructure in schools in Veracruz.

YUCATÁN



BIOFIN - Biodiversity Finance Initiative (IKI)

UNDP

- Training on the challenges and opportunities associated with the development of a strategy for the development of a voluntary carbon market (MVC) in Yucatan.

CITIES ADAPT - Strengthening climate change adaptation in cities (IKI) (Merida)

GIZ

- Adaptation of a demonstration project in a health module.
- Nature-based adaptation with citizen participation.
- Scaling to integrate it into national politics (collaboration with South Africa).

NAMA SME - Energy Efficiency in SMEs as a Contribution to a Low Carbon Economy (Mitigation Action Facility)

GIZ

- Technical support and financial assistance to SMEs for the implementation of energy efficiency measures and services.
- Loan provision tailored to the needs of the companies
- Collaboration with state governments to conduct pilot programs with SMEs of the industrial sector.
- Work to raise awareness among SMEs.
- Catalyzing green financing and supporting political

dialogue for energy efficiency and competitiveness of the SME sector.

Costas Listas - Integrating climate change in marine protected areas and coastal management of the Mesoamerican reef eco-region (IKI)

WWF

- Integrating climate change into marine protected areas and coastal management of the Mesoamerican reef eco-region.
- Develop a portfolio of climate change adaptation options identified through a participatory process that takes into account the needs of local communities and environmental conservation.
- Strengthen capacities of local populations and decision-makers to identify and prioritize climate change adaptation options.
- Integrate aspects and criteria of adaptation to climate change in territorial planning instruments.
- Form a working group in order to disseminate best practices on the identification, integration and implementation of adaptation measures in coastal zones and marine protected areas.

Mexican-German Climate Change Alliance (IKI) (Tzimin)

GIZ

- Solar ice pilot program: sustainable cooling and ice production solutions for fishing cooperatives.
- Conceptual design and engineering of a pilot program for photovoltaic cooling and ice production.
- In collaboration with UNDP (PPD)

OCÉANOS



Carbono Blanco

- Quantification and valorization of inorganic carbon in the ocean.
- Open research published on site; with the aim that COPs include the ocean in the mitigation of climate change.

NACIONAL



BIOCITIS - Protection of biodiversity and ecosystem services in urban coastal regions in Mexico (BMZ)

GIZ

- National land-use planning policy with integration of a sustainability vision.


Preparation of an Emissions Trading System (ETS) in Mexico (SICEM) (IKI)

GIZ

- Support the public and private sectors to establish and implement an Emissions Trading System (SCE) in Mexico and support subnational governments in terms of carbon pricing.

BIOFIN - Biodiversity Finance Initiative (IKI)

UNDP

-  — Develop a roadmap with the financial sector that contributes to the integration of transversal development objectives and promotes the role of finance in the transition to a more sustainable economy.
- Financing to indigenous peoples and local communities for the conservation and restoration of biodiversity.

LACADI - Latin American Climate Assets Disclosure Initiative (IKI)

ICM

- Develop the capacity of institutional investors to include climate change as a key variable in investment decision-making and in the management of climate and financial risks.

Cumbres Resilientes - Strengthening connectivity between protected areas and the resilience of local people in Mexico (BMZ)

GIZ

- Financial instruments for protected natural areas.

Eco-Advance - Greening supply and demand: Promotion of eco-labels and sustainable public procurement for climate and biodiversity protection (IKI)

GIZ

- Boost the supply and demand for sustainable products and services.
- Link products and services to public procurement and possible sources of funding.

Mexican-German Climate Change Alliance (IKI)

GIZ

- Strengthen planning and implementation of climate and biodiversity action.
- Facilitate financing for distributed energy measures and ecosystem-based adaptation.

NTT Data

- Business acceleration and financing alignment.
- Transfer and distribution of knowledge through innovation and performance.
- Training module on:
 - climate change mitigation.
 - financial modeling.
 - gender equity and investment.

Task Force on Climate-Related Financial Disclosures (TCFD)

- Align financial flows to the goals of the Paris Agreement.
- Disseminate information on the impact of climate change on finance.
- Consultancy to specific companies.